



DataLink interface for ARIS

What is DataLink ?

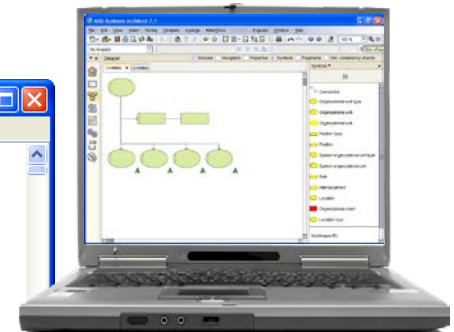
- **Tool for synchronizing external systems with ARIS repository**
- DataLink is being developed based on the proven HR Link solution that is successfully delivered worldwide more than 14 years
- Connects to various data sources (based on extension packs delivered)
- Imports external data and creates reusable object library
- Draws models based on formatting and modeling methods
- Builds synchronization report

```

Report1.txt - Notepad
File Edit Format View Help
Synchronization report
Fri Mar 25 13:39:15 CET 2011
Database: ARIS Modeling Database
Selected group: organisation
Duration: 4 h 37 m 7 s

70066 item(s) created
20024 item(s) updated
2 item(s) marked obsolete
512 item(s) removed
10 synchronization issues

Created items
Item type      Item ID Name      Description
CXNDEF        position2Person - S52135543 > P00720938
CXNDEF        position2Person - S52135543 > P00720936
CXNDEF        position2Person - S52131829 > P00496129
  
```



Some of References



ŠKODA



suva

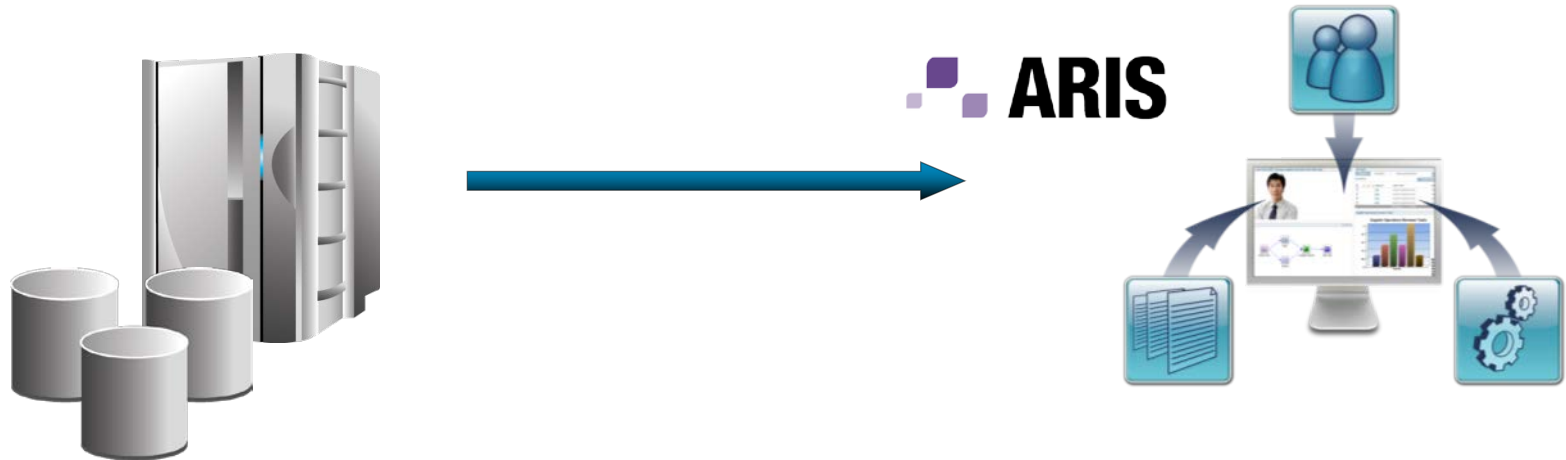


GENERALI
Pojišťovna



DataLink Extension Packs

- Extension pack is pre-prepared configuration set suitable for specific data domain
- Extension Packs available
 - HR Extension Pack – HR DataLink (HR data importing)
 - Asset Extension Pack (IT assets importing)
 - SDK pack (API, documentation and examples for custom development)



DataLink Solves

- Pain points associated with manual update process
 - Resource and time intensive (cost)
 - Duplication of effort (cost)
 - Error prone (integrity)
 - Different sources of truth - which one is correct? (integrity)
 - Constantly out of date (integrity)
 - People come up with their own solution (cost & integrity)



DataLink Features

- **Reliability**
 - DataLink is pre-packaged customized solution vs. custom scripting
 - Support and updates are available
- **Flexibility**
 - Various data sources (SAP ERP, databases, XML, Excel, ...)
 - Synchronization rules can be configured for required integrity
 - Synchronization report output can be customized (Word, Excel, XML, ...)
 - Model formatting can be customized
- **Speed & Scalability**
 - Synchronize 1000s of objects and 100s of models in minutes
 - Runs on server
- **Opened Architecture**
 - Can be delivered with SDK extension pack
 - Well documented API and configuration model

DataLink Delivery Process

Requirements workshop

- What data?
- How to structure?
- How to format?
- How to synchronize?

Configuration and customization

- Implementation reflecting specs

Handover and acceptance

Data and external system configuration

- Connecting to data source
- Data import provement

Installation and testing

- Installation at production environment
- First-run
- Testing and debugging

Duration: 8 – 15 days depends on requirements



How the synchronization works

- Synchronization steps
 - Data is loaded into memory
 - In-memory structure of groups, objects, connections and models is created
 - The in-memory structures are compared to corresponding ARIS structures (create, existing, update, obsolete)
 - ARIS models are formatted

- Important features
 - DataLink items (groups, objects, connections, models) have an id
 - Object and connection definitions are reused by occurrences
 - Items without the id are ignored (you can mix your modeling with synchronized objects in one model)

QUESTIONS ?



E: info@arisdatalink.com